

Husky Way

In Aluminum, Mill-Galvanized Steel, Galvannealed Steel, 304 and 316 Stainless Steel

| | |
|--------------------------|--------------|
| Description of Husky Way | Pg. 7.2 |
| Selection Tables | Pg. 7.3 |
| Numbering System | Pg. 7.4 |
| Loading Tables | Pgs. 7.5-7.7 |



Husky Way

Solid Bottom Tray System

For most widths of tray, Husky Way is a one piece formed pan that provides a flat bottom and a fill depth that is almost the same as the outside height of the tray. Husky Way is available in 3-3/8, 4 and 6 deep styles and can be manufactured from Aluminum, Mill-Galvanized, Galvannealed, 304 or 316 Stainless Steel Material.



The solid bottom design provides total support for cables adding protection. Husky Way can be totally enclosed by adding covers (sold separately) to protect cables from damage, aid in shielding or just for a clean appearance. Husky Way is available in widths from 6 wide through 36 wide.

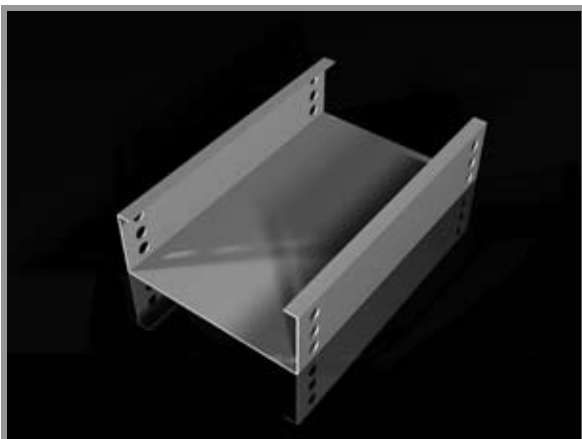
Aluminum—light weight, maintenance free and non-magnetic. Electrical losses are kept to a minimum with this material, but it does not provide shielding for cables from magnetic fields.

Mill-Galvanized Steel—economical, offering good corrosion resistance, and providing shielding from magnetic fields in an enclosed solid bottom system with cover.

Galvannealed Steel—offers the features shown above, plus it is well suited to painting. Galvannealed trays can be painted to match the building color scheme so that it blends in with its surroundings. This system also provides electromagnetic shielding.

Stainless Steel—this material is ideal for corrosive areas, however, because of its non-magnetic feature, it will not provide shielding for sensitive instrument and control or data cables.

We offer a complete line of fittings, covers, accessories, and support items for the Husky Way System to aid in installation and routing.



*An Economical & Easy to Use Cable Tray from **MPHusky**— the Leader in Cable Tray Systems*

Selection Tables

| Aluminum | | | | | |
|-----------|--------------|-----------------------|------------|--------------------|--------|
| Load | Support Span | Siderail Height (in.) | Load Depth | Tray Width | Prefix |
| 100lbs/ft | 10ft | 3.38 | 3.31 | 6,9,12 | ASH6 |
| 100lbs/ft | 10ft | 4 | 3.94 | 6,9,12,18,24,30,36 | ASJ6 |
| 100lbs/ft | 10ft | 6 | 5.94 | 6,9,12,18,24,30,36 | ASM6 |

| Galvannealed | | | | | |
|--------------|--------------|-----------------------|------------|--------------------|--------|
| Load | Support Span | Siderail Height (in.) | Load Depth | Tray Width | Prefix |
| 100lbs/ft | 10ft | 3.38 | 3.35 | 6,9,12,18,24,30,36 | NSH0 |
| 100lbs/ft | 10ft | 4 | 3.96 | 6,9,12,18,24,30,36 | NSJ0 |
| 100lbs/ft | 10ft | 6 | 5.96 | 6,9,12,18,24,30,36 | NSM0 |

| Mill-Galvanized Steel | | | | | |
|-----------------------|--------------|-----------------------|------------|--------------------|--------|
| Load | Support Span | Siderail Height (in.) | Load Depth | Tray Width | Prefix |
| 100lbs/ft | 10ft | 3.38 | 3.35 | 6,9,12,18,24,30,36 | PSH0 |
| 100lbs/ft | 10ft | 4 | 3.96 | 6,9,12,18,24,30,36 | PSJ0 |
| 100lbs/ft | 10ft | 6 | 5.96 | 6,9,12,18,24,30,36 | PSM0 |

| 304 Stainless Steel | | | | | |
|---------------------|--------------|-----------------------|------------|--------------------|--------|
| Load | Support Span | Siderail Height (in.) | Load Depth | Tray Width | Prefix |
| 100lbs/ft | 10ft | 3.38 | 3.35 | 6,9,12,18,24,30,36 | 4SH0 |
| 100lbs/ft | 10ft | 4 | 3.96 | 6,9,12,18,24,30,36 | 4SJ0 |
| 100lbs/ft | 10ft | 6 | 5.96 | 6,9,12,18,24,30,36 | 4SM0 |

| 316 Stainless Steel | | | | | |
|---------------------|--------------|-----------------------|------------|--------------------|--------|
| Load | Support Span | Siderail Height (in.) | Load Depth | Tray Width | Prefix |
| 100lbs/ft | 10ft | 3.38 | 3.35 | 6,9,12,18,24,30,36 | 6SH0 |
| 100lbs/ft | 10ft | 4 | 3.96 | 6,9,12,18,24,30,36 | 6SJ0 |
| 100lbs/ft | 10ft | 6 | 5.96 | 6,9,12,18,24,30,36 | 6SM0 |

HUSKY WAY TROUGH

Numbering System

| ASH6-12-120-BF | | | | | |
|--|---------------------------------------|---|---|-------------------------------|-------------------------------------|
| A | S | H6- | 12- | 120 | -BF |
| Material | Bottom Type | Side Wall Height | Width in Inches | Length in Inches | Brake Form |
| Materials: A=Aluminum N=Galvannealed P=Mill-Galvanized 4=Stainless Steel 304 6=Stainless Steel 316 | Bottom Type: S=Solid Bottom | Side Wall Height: H0= 3-3/8" steel H6=3-3/8" alum J0=4" steel J6=4" alum M0=6" steel, M6=6" alum | Widths: 6" 9" 12" 18" 24" 30" 36" | Lengths: 10' (120") | Tray Type: Brake Form Pan |

Other Technical Data



Depth:

3-3/8, 4, 6

Fittings:

12, 24 or 36 inch standard radii (See the Fittings Section 9 of this catalog for more information).

Splice Plates:

Straight sections and fittings are supplied with splice plates and hardware.

Safety Factor:

Husky Way is manufactured and tested in accordance with NEMA VE-1. The tables on the following pages have a 1.5 safety factor.

(For other tray sizes or specifications, please consult the factory)

A S H6

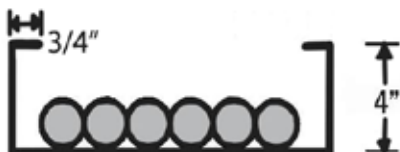
Use ASH6 fittings



| Span (ft.) | 5 | | 6 | | 8 | | 10 | |
|-------------|------|------|------|------|------|------|------|------|
| Width (in.) | Load | Defl | Load | Defl | Load | Defl | Load | Defl |
| 6 | 464 | 0.10 | 322 | 0.15 | 181 | 0.26 | 116 | 0.41 |
| 9 | 464 | 0.10 | 322 | 0.15 | 181 | 0.26 | 116 | 0.41 |
| 12 | 464 | 0.10 | 322 | 0.15 | 181 | 0.26 | 116 | 0.41 |
| 18 | 464 | 0.10 | 322 | 0.15 | 181 | 0.26 | 116 | 0.41 |
| 24 | 464 | 0.10 | 322 | 0.15 | 181 | 0.26 | 116 | 0.41 |
| 30 | 464 | 0.10 | 322 | 0.15 | 181 | 0.26 | 116 | 0.41 |
| 36 | 464 | 0.10 | 322 | 0.15 | 181 | 0.26 | 116 | 0.41 |

A S J6

Use ASJ6 fittings



| Span (ft.) | 5 | | 6 | | 8 | | 10 | |
|-------------|------|------|------|------|------|------|------|------|
| Width (in.) | Load | Defl | Load | Defl | Load | Defl | Load | Defl |
| 6 | 464 | 0.10 | 322 | 0.15 | 181 | 0.26 | 116 | 0.41 |
| 9 | 464 | 0.10 | 322 | 0.15 | 181 | 0.26 | 116 | 0.41 |
| 12 | 464 | 0.10 | 322 | 0.15 | 181 | 0.26 | 116 | 0.41 |
| 18 | 464 | 0.10 | 322 | 0.15 | 181 | 0.26 | 116 | 0.41 |
| 24 | 464 | 0.10 | 322 | 0.15 | 181 | 0.26 | 116 | 0.41 |
| 30 | 464 | 0.10 | 322 | 0.15 | 181 | 0.26 | 116 | 0.41 |
| 36 | 464 | 0.10 | 322 | 0.15 | 181 | 0.26 | 116 | 0.41 |

A S M6

Use ASM6 fittings



| Span (ft.) | 5 | | 6 | | 8 | | 10 | |
|-------------|------|------|------|------|------|------|------|------|
| Width (in.) | Load | Defl | Load | Defl | Load | Defl | Load | Defl |
| 6 | 500 | 0.08 | 347 | 0.12 | 195 | 0.22 | 125 | 0.35 |
| 9 | 500 | 0.08 | 347 | 0.12 | 195 | 0.22 | 125 | 0.35 |
| 12 | 500 | 0.08 | 347 | 0.12 | 195 | 0.22 | 125 | 0.35 |
| 18 | 500 | 0.08 | 347 | 0.12 | 195 | 0.22 | 125 | 0.35 |
| 24 | 500 | 0.08 | 347 | 0.12 | 195 | 0.22 | 125 | 0.35 |
| 30 | 500 | 0.08 | 347 | 0.12 | 195 | 0.22 | 125 | 0.35 |
| 36 | 500 | 0.08 | 347 | 0.12 | 195 | 0.22 | 125 | 0.35 |

Loading Tables for **Galvannealed Husky Way**

N S HO

Use NSHO fittings

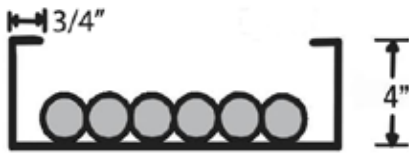


| Span (ft.) | 5 | | 6 | | 8 | | 10 | |
|-------------|------|------|------|------|------|------|------|------|
| Width (in.) | Load | Defl | Load | Defl | Load | Defl | Load | Defl |
| 6 | 432 | 0.07 | 300 | 0.10 | 169 | 0.18 | 108 | 0.28 |
| 9 | 432 | 0.07 | 300 | 0.10 | 169 | 0.18 | 108 | 0.28 |
| 12 | 432 | 0.07 | 300 | 0.10 | 169 | 0.18 | 108 | 0.28 |
| 18 | 432 | 0.07 | 300 | 0.10 | 169 | 0.18 | 108 | 0.28 |
| 24 | 432 | 0.07 | 300 | 0.10 | 169 | 0.18 | 108 | 0.28 |
| 30 | 432 | 0.07 | 300 | 0.10 | 169 | 0.18 | 108 | 0.28 |
| 36 | 432 | 0.07 | 300 | 0.10 | 169 | 0.18 | 108 | 0.28 |

HUSKY WAY TROUGH

N S JO

Use NSJO fittings



| Span (ft.) | 5 | | 6 | | 8 | | 10 | |
|-------------|------|------|------|------|------|------|------|------|
| Width (in.) | Load | Defl | Load | Defl | Load | Defl | Load | Defl |
| 6 | 416 | 0.08 | 289 | 0.12 | 163 | 0.21 | 104 | 0.33 |
| 9 | 416 | 0.08 | 289 | 0.12 | 163 | 0.21 | 104 | 0.33 |
| 12 | 416 | 0.08 | 289 | 0.12 | 163 | 0.21 | 104 | 0.33 |
| 18 | 416 | 0.08 | 289 | 0.12 | 163 | 0.21 | 104 | 0.33 |
| 24 | 416 | 0.08 | 289 | 0.12 | 163 | 0.21 | 104 | 0.33 |
| 30 | 416 | 0.08 | 289 | 0.12 | 163 | 0.21 | 104 | 0.33 |
| 36 | 416 | 0.08 | 289 | 0.12 | 163 | 0.21 | 104 | 0.33 |

N S MO

Use NSMO fittings



| Span (ft.) | 5 | | 6 | | 8 | | 10 | |
|-------------|------|------|------|------|------|------|------|------|
| Width (in.) | Load | Defl | Load | Defl | Load | Defl | Load | Defl |
| 6 | 400 | 0.08 | 278 | 0.12 | 156 | 0.21 | 100 | 0.33 |
| 9 | 400 | 0.08 | 278 | 0.12 | 156 | 0.21 | 100 | 0.33 |
| 12 | 400 | 0.08 | 278 | 0.12 | 156 | 0.21 | 100 | 0.33 |
| 18 | 400 | 0.08 | 278 | 0.12 | 156 | 0.21 | 100 | 0.33 |
| 24 | 400 | 0.08 | 278 | 0.12 | 156 | 0.21 | 100 | 0.33 |
| 30 | 400 | 0.08 | 278 | 0.12 | 156 | 0.21 | 100 | 0.33 |
| 36 | 400 | 0.08 | 278 | 0.12 | 156 | 0.21 | 100 | 0.33 |

Loading Tables for *Mill-Galv Husky Way*

P S HO

Use PSHO fittings



| Span (ft.) | 5 | | 6 | | 8 | | 10 | |
|-------------|------|------|------|------|------|------|------|------|
| Width (in.) | Load | Defl | Load | Defl | Load | Defl | Load | Defl |
| 6 | 432 | 0.07 | 300 | 0.10 | 169 | 0.18 | 108 | 0.28 |
| 9 | 432 | 0.07 | 300 | 0.10 | 169 | 0.18 | 108 | 0.28 |
| 12 | 432 | 0.07 | 300 | 0.10 | 169 | 0.18 | 108 | 0.28 |
| 18 | 432 | 0.07 | 300 | 0.10 | 169 | 0.18 | 108 | 0.28 |
| 24 | 432 | 0.07 | 300 | 0.10 | 169 | 0.18 | 108 | 0.28 |
| 30 | 432 | 0.07 | 300 | 0.10 | 169 | 0.18 | 108 | 0.28 |
| 36 | 432 | 0.07 | 300 | 0.10 | 169 | 0.18 | 108 | 0.28 |

P S JO

Use PSJO fittings



| Span (ft.) | 5 | | 6 | | 8 | | 10 | |
|-------------|------|------|------|------|------|------|------|------|
| Width (in.) | Load | Defl | Load | Defl | Load | Defl | Load | Defl |
| 6 | 416 | 0.08 | 289 | 0.12 | 163 | 0.21 | 104 | 0.33 |
| 9 | 416 | 0.08 | 289 | 0.12 | 163 | 0.21 | 104 | 0.33 |
| 12 | 416 | 0.08 | 289 | 0.12 | 163 | 0.21 | 104 | 0.33 |
| 18 | 416 | 0.08 | 289 | 0.12 | 163 | 0.21 | 104 | 0.33 |
| 24 | 416 | 0.08 | 289 | 0.12 | 163 | 0.21 | 104 | 0.33 |
| 30 | 416 | 0.08 | 289 | 0.12 | 163 | 0.21 | 104 | 0.33 |
| 36 | 416 | 0.08 | 289 | 0.12 | 163 | 0.21 | 104 | 0.33 |

HUSKY WAY TROUGH

P S M0

Use PSM0 fittings

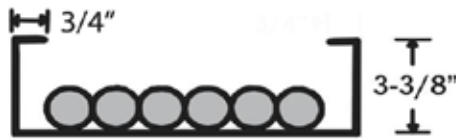


| Span (ft.) | 5 | | 6 | | 8 | | 10 | |
|-------------|------|------|------|------|------|------|------|------|
| Width (in.) | Load | Defl | Load | Defl | Load | Defl | Load | Defl |
| 6 | 400 | 0.08 | 278 | 0.12 | 156 | 0.21 | 100 | 0.33 |
| 9 | 400 | 0.08 | 278 | 0.12 | 156 | 0.21 | 100 | 0.33 |
| 12 | 400 | 0.08 | 278 | 0.12 | 156 | 0.21 | 100 | 0.33 |
| 18 | 400 | 0.08 | 278 | 0.12 | 156 | 0.21 | 100 | 0.33 |
| 24 | 400 | 0.08 | 278 | 0.12 | 156 | 0.21 | 100 | 0.33 |
| 30 | 400 | 0.08 | 278 | 0.12 | 156 | 0.21 | 100 | 0.33 |
| 36 | 400 | 0.08 | 278 | 0.12 | 156 | 0.21 | 100 | 0.33 |

Loading Tables for **304 SS Husky Way**

4 S H0

Use 4SH0 fittings



| Span (ft.) | 5 | | 6 | | 8 | | 10 | |
|-------------|------|------|------|------|------|------|------|------|
| Width (in.) | Load | Defl | Load | Defl | Load | Defl | Load | Defl |
| 6 | 432 | 0.07 | 300 | 0.10 | 169 | 0.18 | 108 | 0.28 |
| 9 | 432 | 0.07 | 300 | 0.10 | 169 | 0.18 | 108 | 0.28 |
| 12 | 432 | 0.07 | 300 | 0.10 | 169 | 0.18 | 108 | 0.28 |
| 18 | 432 | 0.07 | 300 | 0.10 | 169 | 0.18 | 108 | 0.28 |
| 24 | 432 | 0.07 | 300 | 0.10 | 169 | 0.18 | 108 | 0.28 |
| 30 | 432 | 0.07 | 300 | 0.10 | 169 | 0.18 | 108 | 0.28 |
| 36 | 432 | 0.07 | 300 | 0.10 | 169 | 0.18 | 108 | 0.28 |

4 S J0

Use 4SJ0 fittings



| Span (ft.) | 5 | | 6 | | 8 | | 10 | |
|-------------|------|------|------|------|------|------|------|------|
| Width (in.) | Load | Defl | Load | Defl | Load | Defl | Load | Defl |
| 6 | 416 | 0.08 | 289 | 0.12 | 163 | 0.21 | 104 | 0.33 |
| 9 | 416 | 0.08 | 289 | 0.12 | 163 | 0.21 | 104 | 0.33 |
| 12 | 416 | 0.08 | 289 | 0.12 | 163 | 0.21 | 104 | 0.33 |
| 18 | 416 | 0.08 | 289 | 0.12 | 163 | 0.21 | 104 | 0.33 |
| 24 | 416 | 0.08 | 289 | 0.12 | 163 | 0.21 | 104 | 0.33 |
| 30 | 416 | 0.08 | 289 | 0.12 | 163 | 0.21 | 104 | 0.33 |
| 36 | 416 | 0.08 | 289 | 0.12 | 163 | 0.21 | 104 | 0.33 |

4 S M0

Use 4SM0 fittings



| Span (ft.) | 5 | | 6 | | 8 | | 10 | |
|-------------|------|------|------|------|------|------|------|------|
| Width (in.) | Load | Defl | Load | Defl | Load | Defl | Load | Defl |
| 6 | 400 | 0.08 | 278 | 0.12 | 156 | 0.21 | 100 | 0.33 |
| 9 | 400 | 0.08 | 278 | 0.12 | 156 | 0.21 | 100 | 0.33 |
| 12 | 400 | 0.08 | 278 | 0.12 | 156 | 0.21 | 100 | 0.33 |
| 18 | 400 | 0.08 | 278 | 0.12 | 156 | 0.21 | 100 | 0.33 |
| 24 | 400 | 0.08 | 278 | 0.12 | 156 | 0.21 | 100 | 0.33 |
| 30 | 400 | 0.08 | 278 | 0.12 | 156 | 0.21 | 100 | 0.33 |
| 36 | 400 | 0.08 | 278 | 0.12 | 156 | 0.21 | 100 | 0.33 |

HUSKY WAY TROUGH

6 S H0

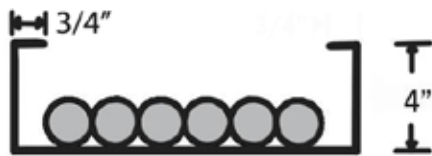
Use 6SH0 fittings



| Span (ft.) | 5 | | 6 | | 8 | | 10 | |
|-------------|------|------|------|------|------|------|------|------|
| Width (in.) | Load | Defl | Load | Defl | Load | Defl | Load | Defl |
| 6 | 432 | 0.07 | 300 | 0.10 | 169 | 0.18 | 108 | 0.28 |
| 9 | 432 | 0.07 | 300 | 0.10 | 169 | 0.18 | 108 | 0.28 |
| 12 | 432 | 0.07 | 300 | 0.10 | 169 | 0.18 | 108 | 0.28 |
| 18 | 432 | 0.07 | 300 | 0.10 | 169 | 0.18 | 108 | 0.28 |
| 24 | 432 | 0.07 | 300 | 0.10 | 169 | 0.18 | 108 | 0.28 |
| 30 | 432 | 0.07 | 300 | 0.10 | 169 | 0.18 | 108 | 0.28 |
| 36 | 432 | 0.07 | 300 | 0.10 | 169 | 0.18 | 108 | 0.28 |

6 S J0

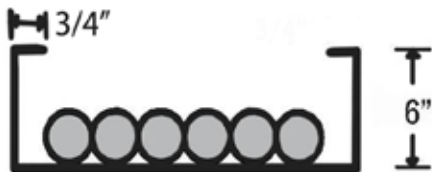
Use 6SJ0 fittings



| Span (ft.) | 5 | | 6 | | 8 | | 10 | |
|-------------|------|------|------|------|------|------|------|------|
| Width (in.) | Load | Defl | Load | Defl | Load | Defl | Load | Defl |
| 6 | 416 | 0.08 | 289 | 0.12 | 163 | 0.21 | 104 | 0.33 |
| 9 | 416 | 0.08 | 289 | 0.12 | 163 | 0.21 | 104 | 0.33 |
| 12 | 416 | 0.08 | 289 | 0.12 | 163 | 0.21 | 104 | 0.33 |
| 18 | 416 | 0.08 | 289 | 0.12 | 163 | 0.21 | 104 | 0.33 |
| 24 | 416 | 0.08 | 289 | 0.12 | 163 | 0.21 | 104 | 0.33 |
| 30 | 416 | 0.08 | 289 | 0.12 | 163 | 0.21 | 104 | 0.33 |
| 36 | 416 | 0.08 | 289 | 0.12 | 163 | 0.21 | 104 | 0.33 |

6 S M0

Use 6SM0 fittings



| Span (ft.) | 5 | | 6 | | 8 | | 10 | |
|-------------|------|------|------|------|------|------|------|------|
| Width (in.) | Load | Defl | Load | Defl | Load | Defl | Load | Defl |
| 6 | 400 | 0.08 | 278 | 0.12 | 156 | 0.21 | 100 | 0.33 |
| 9 | 400 | 0.08 | 278 | 0.12 | 156 | 0.21 | 100 | 0.33 |
| 12 | 400 | 0.08 | 278 | 0.12 | 156 | 0.21 | 100 | 0.33 |
| 18 | 400 | 0.08 | 278 | 0.12 | 156 | 0.21 | 100 | 0.33 |
| 24 | 400 | 0.08 | 278 | 0.12 | 156 | 0.21 | 100 | 0.33 |
| 30 | 400 | 0.08 | 278 | 0.12 | 156 | 0.21 | 100 | 0.33 |
| 36 | 400 | 0.08 | 278 | 0.12 | 156 | 0.21 | 100 | 0.33 |

HUSKY WAY THROUGH